

भारत सरकार
भारतीय हवामानशास्त्र विभाग
प्रादेशिक हवामानशास्त्र केंद्र,
कुलाबा, मुंबई - 400005
दरध्वनी: 22150517/22174707



GOVERNMENT OF INDIA
INDIA METEOROLOGICAL DEPARTMENT
REGIONAL METEOROLOGICAL CENTRE,
COLABA, MUMBAI - 400005
PHONE: 22150517/22174707

Date: 14-04-2026

Time of Issue: 12:33 PM

Forecast and Warning for any day is valid from 0830 hours IST of the day till 0830 hours IST of next day.

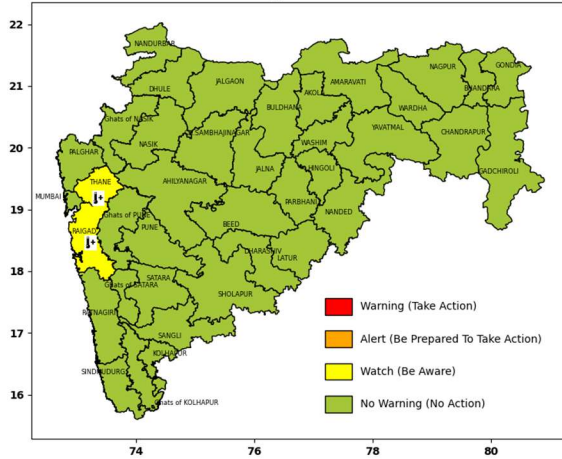
District	Intensity/ Probability	14-04-2026	15-04-2026	16-04-2026	17-04-2026	18-04-2026
		Day 1	Day 2	Day 3	Day 4	Day 5
PALGHAR	Intensity	Dry	Hot and humid conditions in isolated pockets	Hot and humid conditions in isolated pockets	Dry	Dry
	Probability	Very Likely	Very Likely	Very Likely	Very Likely	Very Likely
THANE	Intensity	Hot and humid conditions in isolated pockets	Hot and humid conditions in isolated pockets	Hot and humid conditions in isolated pockets	Dry	Dry
	Probability	Very Likely	Very Likely	Very Likely	Very Likely	Very Likely
MUMBAI	Intensity	Dry	Hot and humid conditions in isolated pockets	Hot and humid conditions in isolated pockets	Dry	Dry
	Probability	Very Likely	Very Likely	Very Likely	Very Likely	Very Likely
RAIGAD	Intensity	Hot and humid conditions in isolated pockets	Hot and humid conditions in isolated pockets	Hot and humid conditions in isolated pockets	Dry	Dry
	Probability	Very Likely	Very Likely	Very Likely	Very Likely	Very Likely
RATNAGIRI	Intensity	Dry	Hot and humid conditions in isolated pockets	Hot and humid conditions in isolated pockets	Dry	Dry
	Probability	Very Likely	Very Likely	Very Likely	Very Likely	Very Likely
SINDHUDURG	Intensity	Dry	Hot and humid conditions in isolated pockets	Hot and humid conditions in isolated pockets	Dry	Dry
	Probability	Very Likely	Very Likely	Very Likely	Very Likely	Very Likely
DHULE	Intensity	Dry	Dry	Dry	Dry	Dry
	Probability	Very Likely	Very Likely	Very Likely	Very Likely	Very Likely
NANDURBAR	Intensity	Dry	Dry	Dry	Dry	Dry
	Probability	Very Likely	Very Likely	Very Likely	Very Likely	Very Likely
JALGAON	Intensity	Dry	Dry	Dry	Dry	Dry
	Probability	Very Likely	Very Likely	Very Likely	Very Likely	Very Likely
NASIK	Intensity	Dry	Dry	Dry	Dry	Dry
	Probability	Very Likely	Very Likely	Very Likely	Very Likely	Very Likely

Ghats of NASIK	Intensity	Dry	Dry	Dry	Dry	Dry
	Probability	Very Likely	Very Likely	Very Likely	Very Likely	Very Likely
AHILYANAGAR	Intensity	Dry	Dry	Dry	Dry	Dry
	Probability	Very Likely	Very Likely	Very Likely	Very Likely	Very Likely
PUNE	Intensity	Dry	Dry	Dry	Dry	Dry
	Probability	Very Likely	Very Likely	Very Likely	Very Likely	Very Likely
Ghats of PUNE	Intensity	Dry	Dry	Dry	Dry	Dry
	Probability	Very Likely	Very Likely	Very Likely	Very Likely	Very Likely
Ghats of KOLHAPUR	Intensity	Dry	Dry	Dry	Dry	Dry
	Probability	Very Likely	Very Likely	Very Likely	Very Likely	Very Likely
KOLHAPUR	Intensity	Dry	Dry	Dry	Dry	Dry
	Probability	Very Likely	Very Likely	Very Likely	Very Likely	Very Likely
SATARA	Intensity	Dry	Dry	Dry	Dry	Dry
	Probability	Very Likely	Very Likely	Very Likely	Very Likely	Very Likely
Ghats of SATARA	Intensity	Dry	Dry	Dry	Dry	Dry
	Probability	Very Likely	Very Likely	Very Likely	Very Likely	Very Likely
SANGLI	Intensity	Dry	Heat wave in isolated pockets.	Heat wave in isolated pockets.	Dry	Light rain/ Thundershowers
	Probability	Very Likely	Very Likely	Very Likely	Very Likely	Very Likely
SHOLAPUR	Intensity	Dry	Heat wave in isolated pockets.	Heat wave in isolated pockets.	Dry	Light rain/ Thundershowers
	Probability	Very Likely	Very Likely	Very Likely	Very Likely	Very Likely
CH.SAMBHAJINAGAR	Intensity	Dry	Dry	Heat wave in isolated pockets.	Dry	Dry
	Probability	Very Likely	Very Likely	Very Likely	Very Likely	Very Likely
JALNA	Intensity	Dry	Dry	Heat wave in isolated pockets.	Heat wave in isolated pockets.	Dry
	Probability	Very Likely	Very Likely	Very Likely	Very Likely	Very Likely
PARBHANI	Intensity	Dry	Dry	Heat wave in isolated pockets.	Heat wave in isolated pockets.	Dry
	Probability	Very Likely	Very Likely	Very Likely	Very Likely	Very Likely
BEED	Intensity	Dry	Dry	Dry	Dry	Dry
	Probability	Very Likely	Very Likely	Very Likely	Very Likely	Very Likely
HINGOLI	Intensity	Dry	Dry	Heat wave in isolated pockets.	Heat wave in isolated pockets.	Dry
	Probability	Very Likely	Very Likely	Very Likely	Very Likely	Very Likely
NANDED	Intensity	Dry	Dry	Dry	Dry	Dry
	Probability	Very Likely	Very Likely	Very Likely	Very Likely	Very Likely
LATUR	Intensity	Dry	Dry	Dry	Dry	Light rain/ Thundershowers
	Probability	Very Likely	Very Likely	Very Likely	Very Likely	Very Likely
DHARASHIV	Intensity	Dry	Dry	Dry	Dry	Light rain/ Thundershowers
	Probability	Very Likely	Very Likely	Very Likely	Very Likely	Very Likely

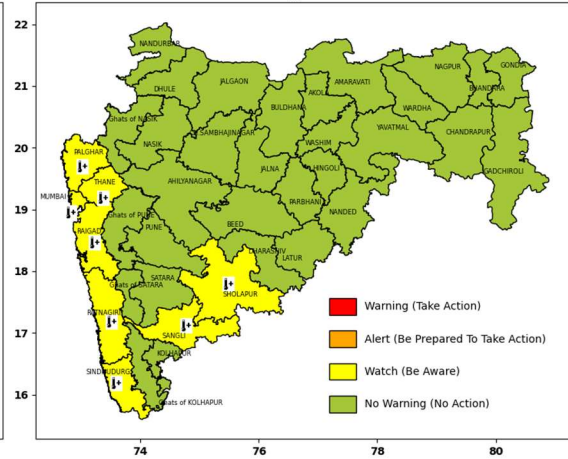
AKOLA	Intensity	No Warning	No Warning	HEAT WAVE CONDITIONS LIKELY AT ISOLATED PLACES.	HEAT WAVE CONDITIONS LIKELY AT ISOLATED PLACES.	HEAT WAVE CONDITIONS LIKELY AT ISOLATED PLACES.
	Probability	Very Likely	Very Likely	Very Likely	Very Likely	Very Likely
AMARAVATI	Intensity	No Warning	No Warning	HEAT WAVE CONDITIONS LIKELY AT ISOLATED PLACES.	HEAT WAVE CONDITIONS LIKELY AT ISOLATED PLACES.	HEAT WAVE CONDITIONS LIKELY AT ISOLATED PLACES.
	Probability	Very Likely	Very Likely	Very Likely	Very Likely	Very Likely
BHANDARA	Intensity	No Warning	No Warning	No Warning	No Warning	No Warning
	Probability	Very Likely	Very Likely	Very Likely	Very Likely	Very Likely
BULDHANA	Intensity	No Warning	No Warning	No Warning	HEAT WAVE CONDITIONS LIKELY AT ISOLATED PLACES.	HEAT WAVE CONDITIONS LIKELY AT ISOLATED PLACES.
	Probability	Very Likely	Very Likely	Very Likely	Very Likely	Very Likely
CHANDRAPUR	Intensity	No Warning	No Warning	No Warning	No Warning	No Warning
	Probability	Very Likely	Very Likely	Very Likely	Very Likely	Very Likely
GADCHIROLI	Intensity	No Warning	No Warning	No Warning	No Warning	No Warning
	Probability	Very Likely	Very Likely	Very Likely	Very Likely	Very Likely
GONDIA	Intensity	No Warning	No Warning	No Warning	No Warning	No Warning
	Probability	Very Likely	Very Likely	Very Likely	Very Likely	Very Likely
NAGPUR	Intensity	No Warning	No Warning	No Warning	No Warning	No Warning
	Probability	Very Likely	Very Likely	Very Likely	Very Likely	Very Likely
WARDHA	Intensity	No Warning	No Warning	No Warning	No Warning	HEAT WAVE CONDITIONS LIKELY AT ISOLATED PLACES.
	Probability	Very Likely	Very Likely	Very Likely	Very Likely	Very Likely
WASHIM	Intensity	No Warning	No Warning	No Warning	No Warning	No Warning
	Probability	Very Likely	Very Likely	Very Likely	Very Likely	Very Likely
YAVATMAL	Intensity	No Warning	No Warning	No Warning	HEAT WAVE CONDITIONS LIKELY AT ISOLATED PLACES.	HEAT WAVE CONDITIONS LIKELY AT ISOLATED PLACES.
	Probability	Very Likely	Very Likely	Very Likely	Very Likely	Very Likely

WARNINGS

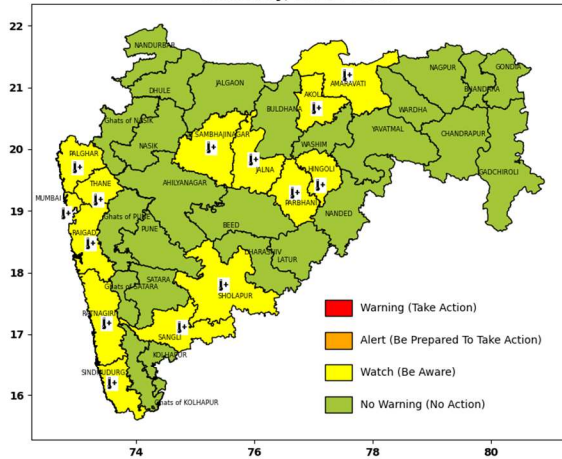
WARNING DAY 1
Tuesday, 14-04-2026



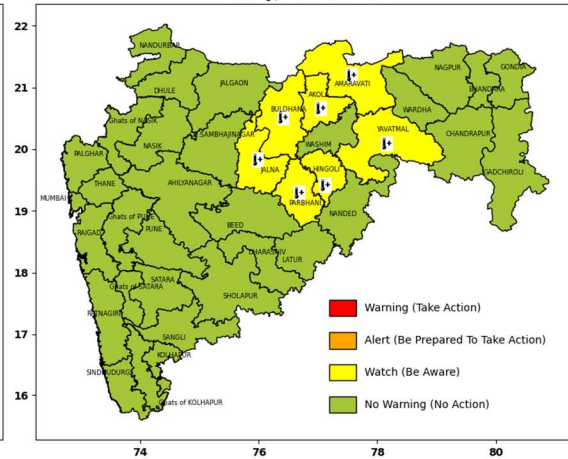
WARNING DAY 2
Wednesday, 15-04-2026



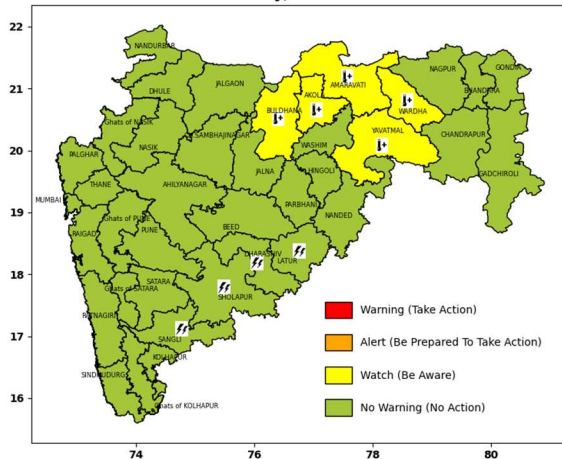
WARNING DAY 3
Thursday, 16-04-2026



WARNING DAY 4
Friday, 17-04-2026



WARNING DAY 5
Saturday, 18-04-2026



Expected Impacts from Heat wave conditions/ Hot and humid conditions:

- Vulnerable people may take necessary precautions.
- It is advised to take precautionary measures for hot weather while going outside during peak hours of the day.
- Heat cramps, heat rash likely during peak hours of the day.

Action Suggested:

- Avoid prolonged heat exposure.
- Stay hydrated. Drink sufficient water even if not feeling thirsty to avoid dehydration.
- Wear light weight, light colored, loose, cotton clothes.
- Cover your head: use a wet cloth, hat or umbrella while going out during peak hours.
- Caution workers to avoid direct sunlight during the peak hours.
- Schedule strenuous jobs to cooler times of the day.
- Increasing the frequency and length of rest breaks for outdoor activities.
- Recognize the signs of heat stroke, heat rash or heat cramps such as weakness, dizziness, headache, nausea, sweating and seizures. If you feel faint or ill, see a doctor/ hospital immediately.
- Farmers are advised to continue irrigation activities.

The warnings are issued based on the latest observations and numerical weather prediction model guidance available. Please be regularly updated with the latest warnings and forecasts issued by IMD in the coming days. Further details are available on websites of IMD HQ, IMD Mumbai and IMD Nagpur. Kindly visit the IMD websites: <https://mausam.imd.gov.in>, <https://mausam.imd.gov.in/mumbai> and <http://www.imdnagpur.gov.in> for current weather updates.

Regional Weather Forecasting Centre RMC Mumbai
Phone: +91 022 22150431/22174719/22174735

Legends:-

* Forecast and Warning for any day is valid from 0830 hours IST of day till 0830 hours IST of next day

Intensity of Rainfall		हिन्दी / मराठी
Very Light	0.1 to 2.4 mm	बहुत हल्की वर्षा / खूप हल्का पाऊस
Light	2.5 - 15.5 mm	हल्की वर्षा / हल्का पाऊस
Moderate	15.6 - 64.4 mm	मध्यम वर्षा / मध्यम पाऊस
Heavy	64.5 - 115.5 mm	भारी वर्षा / जोरदार पाऊस
Very Heavy	115.6 - 204.4 mm	बहुत भारी वर्षा / खूप जोरदार पाऊस
Extremely Heavy	≥ 204.5 mm	अत्यधिक भारी वर्षा / अत्यंत जोरदार पाऊस
Exceptionally Heavy	When the amount is a value near about the highest recorded rainfall at or near the station for the month or season. However, this term will be used only when the actual rainfall amount exceeds 12 cm	असाधारण भारी वर्षा / असामान्य जोरदार पाऊस

Probability of Occurrence (%)	हिन्दी	मराठी
Unlikely	संभावना नहीं	शक्यता नाही
Likely (26-50% probability)	संभावित	संभाव्य / शक्य
Very Likely (51-75% probability)	अधिक संभावना	अधिक शक्यता
Most Likely (Greater than 75% probability)	अत्याधिक संभावना	अत्याधिक शक्यता

Warning Colour Codes	हिन्दी	मराठी
WARNING (TAKE ACTION)	चेतावनी	चेतावणी
ALERT (BE PREPARED TO TAKE ACTION)	सतर्क रहें	सतर्क असावे
WATCH (BE AWARE)	निगरानी रखें	लक्षं असावे
NO WARNING (NO ACTION)	कोई चेतावनी नहीं	धोक्याची सूचना नाही



Heavy Rain



Heavy Snow



Thunderstorm



Dust Storm



Strong Winds



Visibility



Cyclone



Squall/ Hail



Frost



Cold Wave



Heat Wave



Sea State

For more details kindly visit <http://www.imdmumbai.gov.in> or contact Office Tel. : +91 22 22150517 , 22174707

(Service to the Nation since 1875)