

General Insurance

Motor premiums start to improve; retail health remains robust

There is a noticeable recovery in motor premium growth in October across the industry with ICICI Lombard continuing to outperform in this category. We continue to remain constructive on non-life insurance space driven by (1) expected recovery in motor premiums, (2) expected price hike in motor TP in FY22, (3) moderating Covid-19 claims, (4) strong growth in health premiums and (5) players like Ping AN and China Life have seen a moderation in life premiums growth while non-life continues to exhibit strong growth.

- ▶ **ICICI Lombard (ICICIGI) has consistently outperformed in motor. October has been stronger.** Total motor premiums for ICICIGI changed by +12%/-2% YoY in Oct'20/FY21-TD compared to industry change of +3%/-10%, respectively. There was strong performance in both OD and TP category. Motor OD premiums for ICICIGI changed by +10%/-4% YoY in Oct'20/FY21-TD compared to industry change of +2%/-11%. Motor TP premiums for ICICIGI changed by +16%/-0.2% YoY in Oct'20/FY21-TD compared to industry change of +4%/-10%. Overall motor share has improved market share from 9.8% in FY20 to 10.4% in FY21TD (FY20 / 21TD, motor TP market share stood at 7.3% / 7.9% and motor OD market share stood at 13.9% / 14.2%). Retail health premiums for ICICIGI changed by +7%/+2% YoY in Oct'20/FY21-TD compared to industry change of +6%/+14.5%. FY21-TD, ICICIGI has registered +3% GDPI (ex-crop) growth till Oct'20 compared to +3.5% growth at aggregate industry level.
- ▶ **BAGIC shows sharp improvement trends in motor premiums, retail health remains robust:** Compared to average 24% YoY decline in the months of July-September, BAGIC reported 6% decline in motor TP in Oct'20. Retail health has grown 16% in Oct'20, 27% in FY21TD. On YTD basis, overall GDPI (ex-crop) declined 9% YoY. BAGIC's total motor market share declined to 6.9% in FY21-TD compared to 7.6% in FY20 (FY20 / FY21 market share of motor OD stood at 7.9% / 7.7% and motor TP market share stood at 7.3% / 6.5%).
- ▶ **Covid-19 claims (both number and amount) are not growing exponentially. Based on media reports, incremental amount of Covid-19 claims has been US\$209mn in Aug'20, US\$294 in Sep'20 to US\$385 in October 2020 and US\$101 in Nov'20 (data up to 13th Nov'20). (Refer chart 5,6)**
- ▶ **Readings from Ping AN and China Life monthly premium numbers indicate sustained outperformance of non-life over life premium.**
 - **China Life (gross premium mix: 80% life premium and 20% non-life premium as on CY19):** FY21-TD accumulated premium growth for China Life has tapered down from +20% growth in Jan/Feb'20 to 9% in Sep'20 and Oct'20. On monthly basis, accumulated premium numbers for Aug'20 / Sep'20 / Oct'20 declined 1% / 5.6% / 4.7% YoY, respectively.
 - **Ping AN:** Ping AN P&C YTD premiums have risen in the range of 8-11% in the month of Apr'20 to Oct'20 driven by strong growth in accident and health premiums and non-auto segment. Auto premiums have witnessed a growth of 5% YoY in FY21-TD. Non- auto and health premiums have grown 19.6% and 32%, respectively, in FY21TD. FY21-TD life insurance premiums have declined 4% YoY in FY21-TD.

Research Analysts:

Ansuman Deb

ansuman.deb@icicisecurities.com
+91 22 6637 7312

Ravin Kurwa

ravin.kurwa@icicisecurities.com
+91 22 2277 7653

Chart 1: Health premium growth

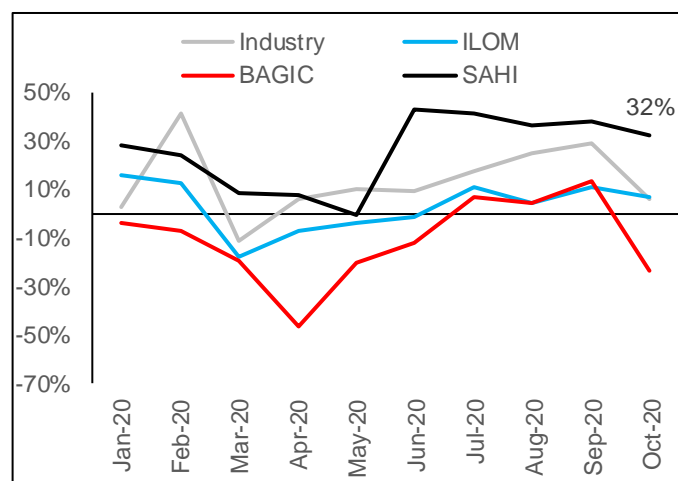


Chart 2: Fire premium growth

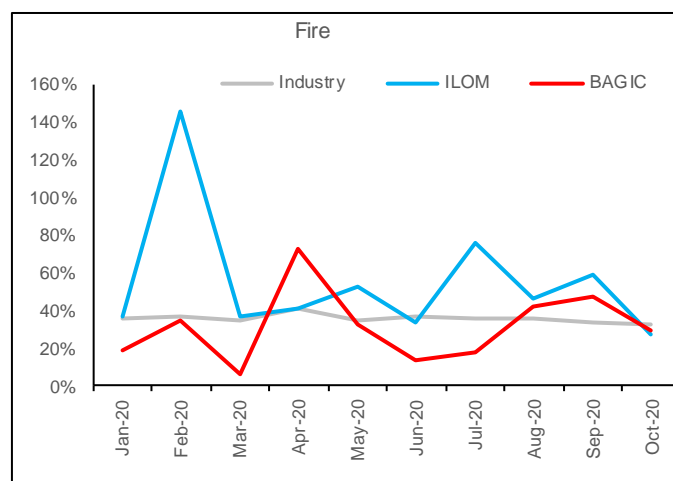


Chart 3: Motor TP premium growth

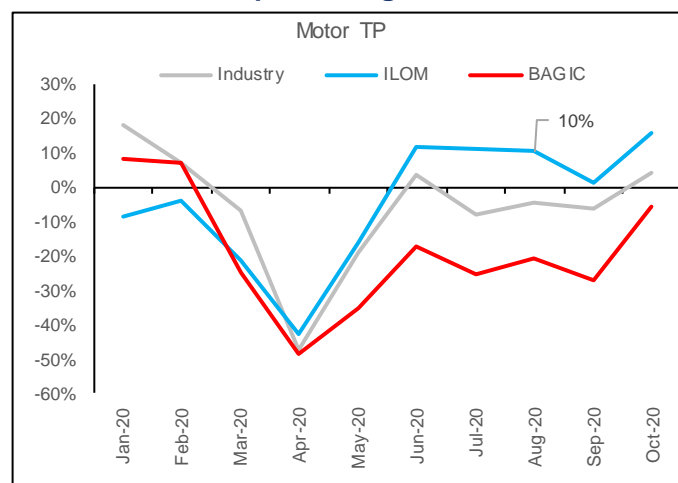
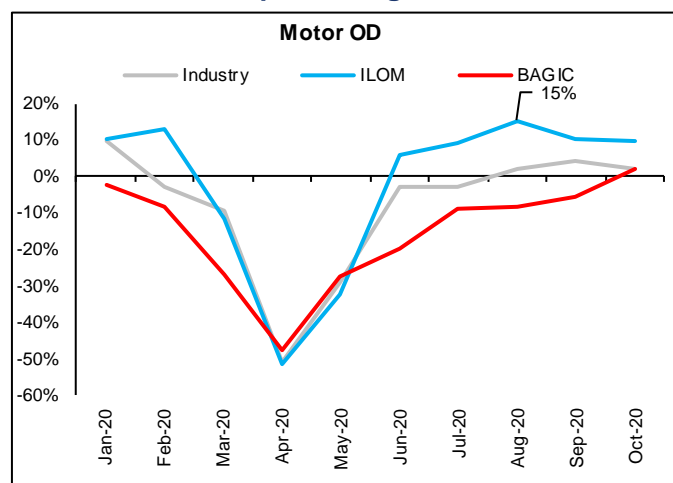


Chart 4: Motor OD premium growth



Source: IRDAI

Table 1: YTD premium growth

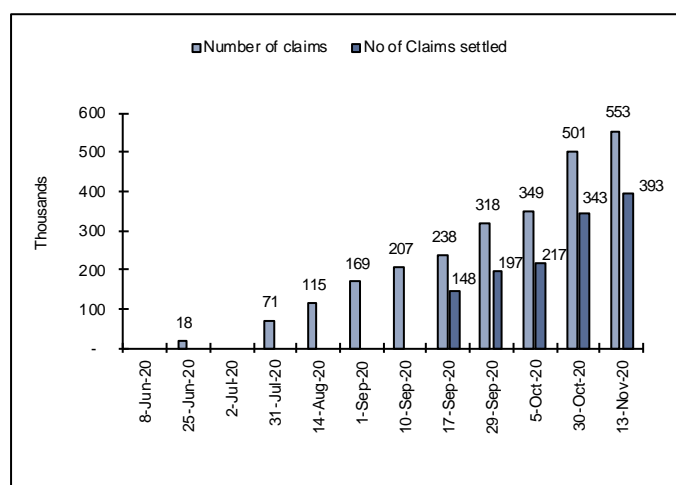
Rs bn Segment	Industry		ICICIGI		BAGIC		Bharti AXA	
	Oct'20	%chg	Oct'20	%chg	Oct'20	%chg	Oct'20	%chg
Fire	131.5	33%	14.4	45%	10.3	41%	2.1	60%
Motor	352.8	-10%	36.5	-2%	24.5	-21%	6.6	-21%
Motor OD	136.5	-11%	19.4	-4%	10.5	-16%	3.8	-20%
Motor TP	216.3	-10%	17.1	0%	14.0	-25%	2.8	-22%
Healthcare	328.8	14.5%	16.9	2%	11.9	-16%	2.5	8%
Retail	139.1	33.6%	4.0	30%	4.5	27%	0.1	16%
Group	189.7	3.7%	12.9	-4%	7.4	-30%	2.4	7%
Marine	19.1	-11%	2.6	-13%	1.0	-7%	0.5	-12%
Engineering	16.4	8%	2.1	12%	1.3	47%	0.2	6%
Aviation	4.3	22%	0.6	26%	0.1	117%	-	0%
Liability	19.6	13%	3.1	11%	2.6	18%	0.3	11%
PA	28.0	-6%	1.8	-40%	1.2	-27%	0.3	16%
Crop	196.4	-8%	0.3	-53%	17.6	-5%	6.9	15%
Misc	31.0	-7%	1.6	-28%	3.1	-24%	0.2	29%
Total	1,127.8	1.2%	79.9	2.4%	73.6	-9%	19.5	0.9%
Ex crop	931.5	3.5%	79.6	3%	55.9	-10%	12.6	-5%

Source: IRDAI

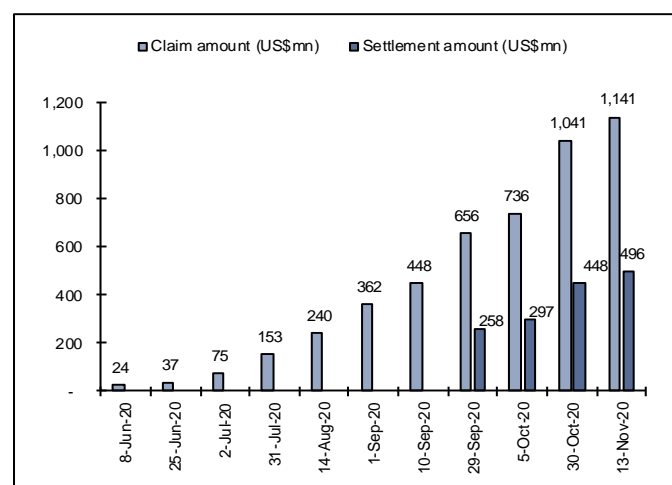
Table 2: Monthly premium growth

Rs bn Segment	Industry		ICICI		BAGIC		Bharti AXA	
	Oct'20	%chg	Oct'20	%chg	Oct'20	%chg	Oct'20	%chg
Fire	16.0	30%	1.8	28%	1.5	29%	0.3	113%
Motor	71.8	3%	9.0	12%	5.2	-2%	-	0%
Motor OD	28.8	2%	4.8	10%	2.3	2%	1.6	0%
Motor TP	43.1	4%	4.2	16%	2.9	-6%	1.0	-1%
Healthcare	40.7	6%	2.4	7%	1.7	-24%	0.4	29%
Retail	19.8	30%	0.6	32%	0.6	16%	0.0	17%
Group	20.9	-9%	1.8	0%	1.1	-36%	0.4	29%
Marine	2.9	-22%	0.4	-11%	0.1	-16%	0.1	19%
Engineering	2.5	21%	0.3	6%	0.2	61%	0.0	33%
Aviation	1.1	59%	0.1	70%	0.0	-37%	-	0%
Liability	2.7	37%	0.4	55%	0.2	94%	0.0	19%
PA	4.7	2%	0.4	-23%	0.1	-33%	0.0	-8%
Crop	12.8	-42%	-	-100%	(0.1)	-721%	1.4	4%
Misc	4.2	11%	0.3	-10%	0.5	-23%	0.0	14%
Total	159.5	0.2%	15.0	10%	9.5	-6%	4.0	9%
Ex crop	146.7	7%	15.0	11%	9.6	-4%	2.6	12%

Source: IRDAI

Chart 5: Number of Covid claims

Source: Asialnsurance review, media reports

Chart 6: Covid claim amount (US\$m)

ICICI Securities has received an investment banking mandate from I ICICI Lombard General Insurance Company Limited. This update is prepared on the basis of publicly available information.

ICICI Lombard General Insurance Company Limited is a group company (Associate) of ICICI Securities Limited. However, the report and views are based on publicly available information."

In case of industry/sector reports or a report containing multiple stocks, the rating/recommendation for a particular stock may be based on the last released stock specific report for that company."

This report may be distributed in Singapore by ICICI Securities, Inc. (Singapore branch). Any recipients of this report in Singapore should contact ICICI Securities, Inc. (Singapore branch) in respect of any matters arising from, or in connection with, this report. The contact details of ICICI Securities, Inc. (Singapore branch) are as follows: Address: 10 Collyer Quay, #40-92 Ocean Financial Tower, Singapore - 049315, Tel: +65 6232 2451 and email: navneet_babbar@icicisecuritiesinc.com, Rishi_agrawal@icicisecuritiesinc.com.

"In case of eligible investors based in Japan, charges for brokerage services on execution of transactions do not in substance constitute charge for research reports and no charges are levied for providing research reports to such investors."

New I-Sec investment ratings (All ratings and target price refers to 12-month performance horizon, unless mentioned otherwise)

BUY: >15% return; ADD: 5% to 15% return; HOLD: Negative 5% to Positive 5% return; REDUCE: Negative 5% to Negative 15% return; SELL: < negative 15% return

ANALYST CERTIFICATION

I/We, Ansuman Deb, MBA, BE; Ravin Kurwa, CA authors and the names subscribed to this report, hereby certify that all of the views expressed in this research report accurately reflect our views about the subject issuer(s) or securities. We also certify that no part of our compensation was, is, or will be directly or indirectly related to the specific recommendation(s) or view(s) in this report. Analysts are not registered as research analysts by FINRA and are not associated persons of the ICICI Securities Inc. It is also confirmed that above mentioned Analysts of this report have not received any compensation from the companies mentioned in the report in the preceding twelve months and do not serve as an officer, director or employee of the companies mentioned in the report.

Terms & conditions and other disclosures:

ICICI Securities Limited (ICICI Securities) is a full-service, integrated investment banking and is, inter alia, engaged in the business of stock brokering and distribution of financial products. ICICI Securities Limited is a SEBI registered Research Analyst with SEBI Registration Number – INH000000990. ICICI Securities Limited SEBI Registration is INZ000183631 for stock broker. ICICI Securities is a subsidiary of ICICI Bank which is India's largest private sector bank and has its various subsidiaries engaged in businesses of housing finance, asset management, life insurance, general insurance, venture capital fund management, etc. ("associates"), the details in respect of which are available on www.icicibank.com.

ICICI Securities is one of the leading merchant bankers/ underwriters of securities and participate in virtually all securities trading markets in India. We and our associates might have investment banking and other business relationship with a significant percentage of companies covered by our Investment Research Department. ICICI Securities generally prohibits its analysts, persons reporting to analysts and their relatives from maintaining a financial interest in the securities or derivatives of any companies that the analysts cover.

Recommendation in reports based on technical and derivative analysis centre on studying charts of a stock's price movement, outstanding positions, trading volume etc as opposed to focusing on a company's fundamentals and, as such, may not match with the recommendation in fundamental reports. Investors may visit icicidirect.com to view the Fundamental and Technical Research Reports.

Our proprietary trading and investment businesses may make investment decisions that are inconsistent with the recommendations expressed herein.

ICICI Securities Limited has two independent equity research groups: Institutional Research and Retail Research. This report has been prepared by the Institutional Research. The views and opinions expressed in this document may or may not match or may be contrary with the views, estimates, rating, target price of the Retail Research.

The information and opinions in this report have been prepared by ICICI Securities and are subject to change without any notice. The report and information contained herein is strictly confidential and meant solely for the selected recipient and may not be altered in any way, transmitted to, copied or distributed, in part or in whole, to any other person or to the media or reproduced in any form, without prior written consent of ICICI Securities. While we would endeavour to update the information herein on a reasonable basis, ICICI Securities is under no obligation to update or keep the information current. Also, there may be regulatory, compliance or other reasons that may prevent ICICI Securities from doing so. Non-rated securities indicate that rating on a particular security has been suspended temporarily and such suspension is in compliance with applicable regulations and/or ICICI Securities policies, in circumstances where ICICI Securities might be acting in an advisory capacity to this company, or in certain other circumstances.

This report is based on information obtained from public sources and sources believed to be reliable, but no independent verification has been made nor is its accuracy or completeness guaranteed. This report and information herein is solely for informational purpose and shall not be used or considered as an offer document or solicitation of offer to buy or sell or subscribe for securities or other financial instruments. Though disseminated to all the customers simultaneously, not all customers may receive this report at the same time. ICICI Securities will not treat recipients as customers by virtue of their receiving this report. Nothing in this report constitutes investment, legal, accounting and tax advice or a representation that any investment or strategy is suitable or appropriate to your specific circumstances. The securities discussed and opinions expressed in this report may not be suitable for all investors, who must make their own investment decisions, based on their own investment objectives, financial positions and needs of specific recipient. This may not be taken in substitution for the exercise of independent judgment by any recipient. The recipient should independently evaluate the investment risks. The value and return on investment may vary because of changes in interest rates, foreign exchange rates or any other reason. ICICI Securities accepts no liabilities whatsoever for any loss or damage of any kind arising out of the use of this report. Past performance is not necessarily a guide to future performance. Investors are advised to see Risk Disclosure Document to understand the risks associated before investing in the securities markets. Actual results may differ materially from those set forth in projections. Forward-looking statements are not predictions and may be subject to change without notice.

ICICI Securities or its associates might have managed or co-managed public offering of securities for the subject company or might have been mandated by the subject company for any other assignment in the past twelve months.

ICICI Securities or its associates might have received any compensation from the companies mentioned in the report during the period preceding twelve months from the date of this report for services in respect of managing or co-managing public offerings, corporate finance, investment banking or merchant banking, brokerage services or other advisory service in a merger or specific transaction.

ICICI Securities or its associates might have received any compensation for products or services other than investment banking or merchant banking or brokerage services from the companies mentioned in the report in the past twelve months.

ICICI Securities encourages independence in research report preparation and strives to minimize conflict in preparation of research report. ICICI Securities or its associates or its analysts did not receive any compensation or other benefits from the companies mentioned in the report or third party in connection with preparation of the research report. Accordingly, neither ICICI Securities nor Research Analysts and their relatives have any material conflict of interest at the time of publication of this report.

Compensation of our Research Analysts is not based on any specific merchant banking, investment banking or brokerage service transactions.

ICICI Securities or its subsidiaries collectively or Research Analysts or their relatives do not own 1% or more of the equity securities of the Company mentioned in the report as of the last day of the month preceding the publication of the research report.

Since associates of ICICI Securities are engaged in various financial service businesses, they might have financial interests or beneficial ownership in various companies including the subject company/companies mentioned in this report.

ICICI Securities may have issued other reports that are inconsistent with and reach different conclusion from the information presented in this report.

Neither the Research Analysts nor ICICI Securities have been engaged in market making activity for the companies mentioned in the report.

We submit that no material disciplinary action has been taken on ICICI Securities by any Regulatory Authority impacting Equity Research Analysis activities.

This report is not directed or intended for distribution to, or use by, any person or entity who is a citizen or resident of or located in any locality, state, country or other jurisdiction, where such distribution, publication, availability or use would be contrary to law, regulation or which would subject ICICI Securities and affiliates to any registration or licensing requirement within such jurisdiction. The securities described herein may or may not be eligible for sale in all jurisdictions or to certain category of investors. Persons in whose possession this document may come are required to inform themselves of and to observe such restriction.

This report has not been prepared by ICICI Securities, Inc. However, ICICI Securities, Inc. has reviewed the report and, in so far as it includes current or historical information, it is believed to be reliable, although its accuracy and completeness cannot be guaranteed.