



Regional Meteorological Centre Mumbai  
India Meteorological Department  
Ministry of Earth Sciences  
Government of India



## District Forecast & Warnings for Next 5 Days

Date: 22-06-2025

Time of Issue: 13:00 PM

*Forecast and Warning for any day is valid from 0830 hours IST of the day till 0830 hours IST of next day.*

District	Intensity/ Probability	22-06-2025	23-06-2025	24-06-2025	25-06-2025	26-06-2025
		Day 1	Day 2	Day 3	Day 4	Day 5
PALGHAR	Intensity	Heavy rainfall at isolated places. एक दोन ठिकाणी मुसळधार पाऊस पडण्याची शक्यता आहे.	Heavy rainfall at isolated places. एक दोन ठिकाणी मुसळधार पाऊस पडण्याची शक्यता आहे.	Heavy rainfall at isolated places. एक दोन ठिकाणी मुसळधार पाऊस पडण्याची शक्यता आहे.	Heavy rainfall at isolated places. एक दोन ठिकाणी मुसळधार पाऊस पडण्याची शक्यता आहे.	Heavy rainfall at a few places. काही ठिकाणी मुसळधार पावसाची शक्यता.
	Probability	Very Likely	Very Likely	Very Likely	Very Likely	Very Likely
THANE	Intensity	Heavy rainfall at isolated places. एक दोन ठिकाणी मुसळधार पाऊस पडण्याची शक्यता आहे.	Heavy rainfall at isolated places. एक दोन ठिकाणी मुसळधार पाऊस पडण्याची शक्यता आहे.	Heavy rainfall at isolated places. एक दोन ठिकाणी मुसळधार पाऊस पडण्याची शक्यता आहे.	Heavy rainfall at isolated places. एक दोन ठिकाणी मुसळधार पाऊस पडण्याची शक्यता आहे.	Heavy rainfall at isolated places. एक दोन ठिकाणी मुसळधार पाऊस पडण्याची शक्यता आहे.
	Probability	Very Likely	Very Likely	Very Likely	Very Likely	Very Likely
MUMBAI	Intensity	Heavy rainfall at isolated places. एक दोन ठिकाणी मुसळधार पाऊस पडण्याची शक्यता आहे.	Heavy rainfall at a few places. काही ठिकाणी मुसळधार पावसाची शक्यता.	Heavy rainfall at isolated places. एक दोन ठिकाणी मुसळधार पाऊस पडण्याची शक्यता आहे.	Moderate rain मध्यम पाऊस	Heavy rainfall at isolated places. एक दोन ठिकाणी मुसळधार पाऊस पडण्याची शक्यता आहे.
	Probability	Very Likely	Very Likely	Very Likely	Very Likely	Very Likely
RAIGAD	Intensity	Heavy to very heavy rainfall at isolated places. एक दोन ठिकाणी मुसळधार ते अतिमुसळधार पावसाची शक्यता	Heavy to very heavy rainfall at a few places. काही ठिकाणी मुसळधार ते अतिमुसळधार पावसाची शक्यता.	Heavy rainfall at a few places. काही ठिकाणी मुसळधार पावसाची शक्यता.	Heavy rainfall at a few places. काही ठिकाणी मुसळधार पावसाची शक्यता.	Heavy to very heavy rainfall at isolated places. एक दोन ठिकाणी मुसळधार ते अतिमुसळधार पावसाची शक्यता
	Probability	Very Likely	Very Likely	Very Likely	Very Likely	Very Likely
RATNAGIRI	Intensity	Heavy to very heavy rainfall at isolated places. एक दोन ठिकाणी मुसळधार ते अतिमुसळधार पावसाची शक्यता	Heavy to very heavy rainfall at a few places. काही ठिकाणी मुसळधार ते अतिमुसळधार पावसाची शक्यता.	Heavy rainfall at a few places. काही ठिकाणी मुसळधार पावसाची शक्यता.	Heavy rainfall at a few places. काही ठिकाणी मुसळधार पावसाची शक्यता.	Heavy to very heavy rainfall at isolated places. एक दोन ठिकाणी मुसळधार ते अतिमुसळधार पावसाची शक्यता
	Probability	Very Likely	Very Likely	Very Likely	Very Likely	Very Likely
SINDHUDURG	Intensity	Heavy rainfall at isolated places. एक दोन ठिकाणी मुसळधार पाऊस पडण्याची शक्यता आहे.	Heavy to very heavy rainfall at isolated places. एक दोन ठिकाणी मुसळधार ते अतिमुसळधार पावसाची शक्यता	Heavy rainfall at isolated places. एक दोन ठिकाणी मुसळधार पाऊस पडण्याची शक्यता आहे.	Heavy rainfall at a few places. काही ठिकाणी मुसळधार पावसाची शक्यता.	Heavy rainfall at a few places. काही ठिकाणी मुसळधार पावसाची शक्यता.
	Probability	Very Likely	Very Likely	Very Likely	Very Likely	Very Likely

DHULE	Intensity	Light to moderate rain. हलका ते मध्यम पाऊस.	Light to moderate rain. हलका ते मध्यम पाऊस.	Light rain at isolated places. एक दोन ठिकाणी हल्का पाऊस	Light to moderate rain / Thundershower S. हल्का ते मध्यम पाऊस/विजांच्या कडकडाटासह पाऊस	Thunderstorm accompanied with lightning , light to moderate rainfall & gusty winds (30-40kmph) at isolated places. तुळक ठिकाणी विजांच्या कडकडाटासह वादळे, हलका ते मध्यम पाऊस आणि सोसाट्याचा वारा (३०-४० किमी प्रतितास) येण्याची शक्यता आहे
	Probability	Very Likely	Very Likely	Very Likely	Very Likely	Very Likely
NANDURBAR	Intensity	Heavy rainfall at isolated places. एक दोन ठिकाणी मुसळधार पाऊस पडण्याची शक्यता आहे.	Moderate rain मध्यम पाऊस	Light to moderate rain. हलका ते मध्यम पाऊस.	Light to moderate rain / Thundershower S. हल्का ते मध्यम पाऊस/विजांच्या कडकडाटासह पाऊस	Thunderstorm accompanied with lightning , light to moderate rainfall & gusty winds (30-40kmph) at isolated places. तुळक ठिकाणी विजांच्या कडकडाटासह वादळे, हलका ते मध्यम पाऊस आणि सोसाट्याचा वारा (३०-४० किमी प्रतितास) येण्याची शक्यता आहे
	Probability	Very Likely	Very Likely	Very Likely	Very Likely	Very Likely
JALGAON	Intensity	Light to moderate rain. हलका ते मध्यम पाऊस.	Light rain at isolated places. एक दोन ठिकाणी हल्का पाऊस	Light rain/ Thundershower S. हलका पाऊस/गडगडाट.	Thunderstorm accompanied with lightning , light to moderate rainfall & gusty winds (30-40kmph) at isolated places. तुळक ठिकाणी विजांच्या कडकडाटासह वादळे, हलका ते मध्यम पाऊस आणि सोसाट्याचा वारा (३०-४० किमी प्रतितास) येण्याची शक्यता आहे	Thunderstorm accompanied with lightning , light to moderate rainfall & gusty winds (30-40kmph) at isolated places. तुळक ठिकाणी विजांच्या कडकडाटासह वादळे, हलका ते मध्यम पाऊस आणि सोसाट्याचा वारा (३०-४० किमी प्रतितास) येण्याची शक्यता आहे
	Probability	Very Likely	Very Likely	Very Likely	Very Likely	Very Likely
NASIK	Intensity	Light to moderate rain. हलका ते मध्यम पाऊस.	Light to moderate rain. हलका ते मध्यम पाऊस.	Light to moderate rain. हलका ते मध्यम पाऊस.	Light to moderate rain / Thundershower S. हल्का ते मध्यम पाऊस/विजांच्या कडकडाटासह पाऊस	Light to moderate rain / Thundershower S. हल्का ते मध्यम पाऊस/विजांच्या कडकडाटासह पाऊस
	Probability	Very Likely	Very Likely	Very Likely	Very Likely	Very Likely
Ghats of NASIK	Intensity	Heavy rainfall at isolated places. एक दोन ठिकाणी मुसळधार पाऊस पडण्याची शक्यता आहे.	Heavy rainfall at isolated places. एक दोन ठिकाणी मुसळधार पाऊस पडण्याची शक्यता आहे.	Heavy rainfall at isolated places. एक दोन ठिकाणी मुसळधार पाऊस पडण्याची शक्यता आहे.	Heavy rainfall at isolated places. एक दोन ठिकाणी मुसळधार पाऊस पडण्याची शक्यता आहे.	Heavy rainfall at isolated places. एक दोन ठिकाणी मुसळधार पाऊस पडण्याची शक्यता आहे.
	Probability	Very Likely	Very Likely	Very Likely	Very Likely	Very Likely
AHILYANAGAR	Intensity	Light rain/ Thundershowers. हलका पाऊस/गडगडाट.	Light rain at isolated places. एक दोन ठिकाणी हल्का पाऊस	Light rain at isolated places. एक दोन ठिकाणी हल्का पाऊस	Light rain at isolated places. एक दोन ठिकाणी हल्का पाऊस	Light rain at isolated places. एक दोन ठिकाणी हल्का पाऊस
	Probability	Very Likely	Very Likely	Very Likely	Very Likely	Very Likely
PUNE	Intensity	Light to moderate rain. हलका ते मध्यम पाऊस.	Light to moderate rain. हलका ते मध्यम पाऊस.	Light to moderate rain. हलका ते मध्यम पाऊस.	Light to moderate rain. हलका ते मध्यम पाऊस.	Light to moderate rain. हलका ते मध्यम पाऊस.
	Probability	Very Likely	Very Likely	Very Likely	Very Likely	Very Likely

[illegible]

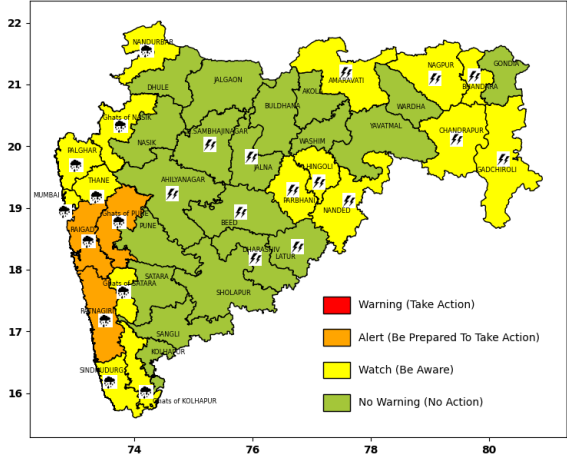
[illegible]

<b>AKOLA</b>	Intensity	NO WARNING	THUNDERSTORM ACCOMPANIED WITH LIGHTNING / GUSTY WINDS (SPEED REACHING 30-40 KMPH) VERY LIKELY TO OCCUR AT ISOLATED PLACES.	NO WARNING	NO WARNING	NO WARNING
	Probability	Very Likely	Very Likely	Very Likely	Very Likely	Very Likely
<b>AMARAVATI</b>	Intensity	THUNDERSTORM ACCOMPANIED WITH LIGHTNING / GUSTY WINDS (SPEED REACHING 30-40 KMPH) VERY LIKELY TO OCCUR AT ISOLATED PLACES.	THUNDERSTORM ACCOMPANIED WITH LIGHTNING / GUSTY WINDS (SPEED REACHING 30-40 KMPH) VERY LIKELY TO OCCUR AT ISOLATED PLACES.	NO WARNING	HEAVY RAINFALL LIKELY TO OCCUR AT ISOLATED PLACES.	HEAVY RAINFALL LIKELY TO OCCUR AT ISOLATED PLACES.
	Probability	Very Likely	Very Likely	Very Likely	Very Likely	Very Likely
<b>BHANDARA</b>	Intensity	THUNDERSTORM ACCOMPANIED WITH LIGHTNING / GUSTY WINDS (SPEED REACHING 30-40 KMPH) VERY LIKELY TO OCCUR AT ISOLATED PLACES.	NO WARNING	NO WARNING	HEAVY RAINFALL LIKELY TO OCCUR AT ISOLATED PLACES.	HEAVY RAINFALL LIKELY TO OCCUR AT ISOLATED PLACES.
	Probability	Very Likely	Very Likely	Very Likely	Very Likely	Very Likely
<b>BULDHANA</b>	Intensity	NO WARNING	THUNDERSTORM ACCOMPANIED WITH LIGHTNING / GUSTY WINDS (SPEED REACHING 30-40 KMPH) VERY LIKELY TO OCCUR AT ISOLATED PLACES.	NO WARNING	NO WARNING	NO WARNING
	Probability	Very Likely	Very Likely	Very Likely	Very Likely	Very Likely
<b>CHANDRAPUR</b>	Intensity	THUNDERSTORM ACCOMPANIED WITH LIGHTNING / GUSTY WINDS (SPEED REACHING 30-40 KMPH) VERY LIKELY TO OCCUR AT ISOLATED PLACES.	NO WARNING	NO WARNING	NO WARNING	HEAVY RAINFALL LIKELY TO OCCUR AT ISOLATED PLACES.
	Probability	Very Likely	Very Likely	Very Likely	Very Likely	Very Likely

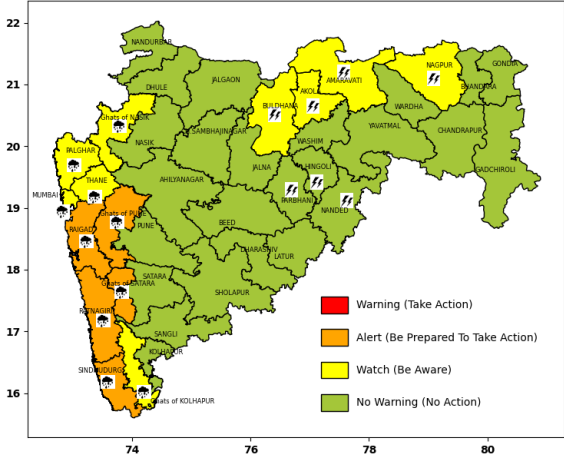
<b>GADCHIROLI</b>	Intensity	THUNDERSTORM ACCOMPANIED WITH LIGHTNING / GUSTY WINDS (SPEED REACHING 30-40 KMPH) VERY LIKELY TO OCCUR AT ISOLATED PLACES.	NO WARNING	NO WARNING	HEAVY RAINFALL LIKELY TO OCCUR AT ISOLATED PLACES.	HEAVY RAINFALL LIKELY TO OCCUR AT ISOLATED PLACES.
	Probability	Very Likely	Very Likely	Very Likely	Very Likely	Very Likely
<b>GONDIA</b>	Intensity	NO WARNING	NO WARNING	NO WARNING	NO WARNING	HEAVY RAINFALL LIKELY TO OCCUR AT ISOLATED PLACES.
	Probability	Very Likely	Very Likely	Very Likely	Very Likely	Very Likely
<b>NAGPUR</b>	Intensity	THUNDERSTORM ACCOMPANIED WITH LIGHTNING / GUSTY WINDS (SPEED REACHING 30-40 KMPH) VERY LIKELY TO OCCUR AT ISOLATED PLACES.	THUNDERSTORM ACCOMPANIED WITH LIGHTNING / GUSTY WINDS (SPEED REACHING 30-40 KMPH) VERY LIKELY TO OCCUR AT ISOLATED PLACES.	NO WARNING	HEAVY RAINFALL LIKELY TO OCCUR AT ISOLATED PLACES.	HEAVY RAINFALL LIKELY TO OCCUR AT ISOLATED PLACES.
	Probability	Very Likely	Very Likely	Very Likely	Very Likely	Very Likely
<b>WARDHA</b>	Intensity	NO WARNING	NO WARNING	NO WARNING	NO WARNING	NO WARNING
	Probability	Very Likely	Very Likely	Very Likely	Very Likely	Very Likely
<b>WASHIM</b>	Intensity	NO WARNING	NO WARNING	NO WARNING	NO WARNING	NO WARNING
	Probability	Very Likely	Very Likely	Very Likely	Very Likely	Very Likely
<b>YAVATMAL</b>	Intensity	NO WARNING	NO WARNING	NO WARNING	NO WARNING	NO WARNING
	Probability	Very Likely	Very Likely	Very Likely	Very Likely	Very Likely

# WARNINGS

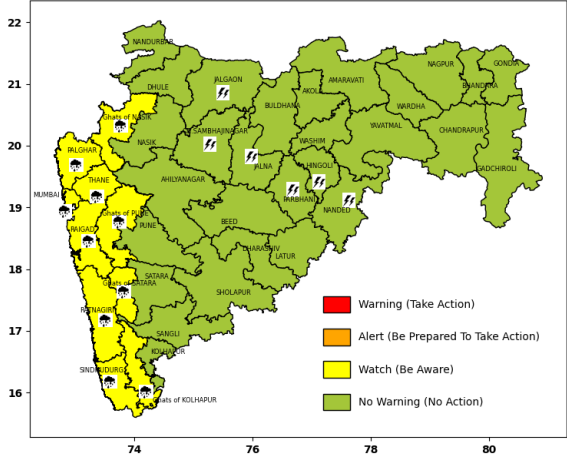
**WARNING DAY 1**  
**Sunday, 22-06-2025**



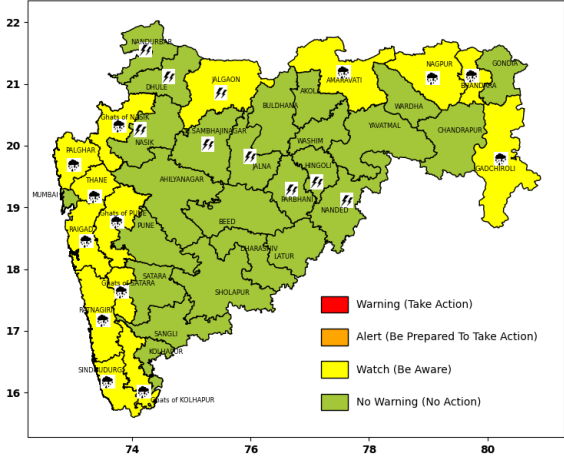
**WARNING DAY 2**  
**Monday, 23-06-2025**



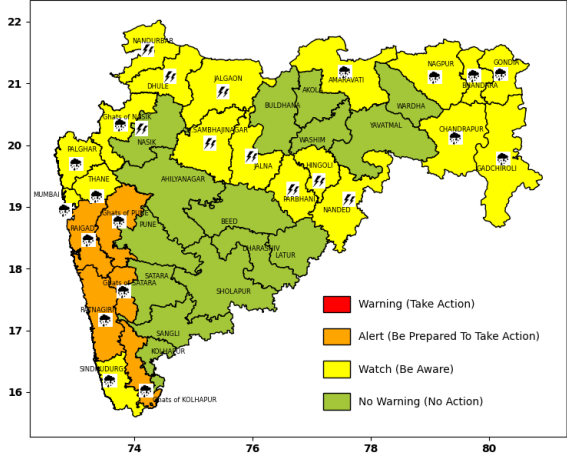
**WARNING DAY 3**  
**Tuesday, 24-06-2025**



**WARNING DAY 4**  
**Wednesday, 25-06-2025**



**WARNING DAY 5**  
**Thursday, 26-06-2025**



**Impact Expected:**

- Possibility of cloud to ground lightning at isolated places.
- Fall of weak trees or weak structures due to gusty winds.
- Localized and short-term disruption of power.
- Damage to crops due to unseasonal rainfall.
- Strong wind/hail may damage plantation, horticulture, and standing crops.
- Minor damage to kutcha houses/walls and huts.

**Action Suggested:**

- Avoid working in open areas and fields while thunderstorms are taking place.
- Avoid taking shelter under tall trees and structures when a thunderstorm is occurring.
- Unplug electrical/electronic appliances.
- Immediately get out of water bodies.
- Keep away from all objects that conduct electricity.

**Agromet Advisory:**

- As there is a possibility of thunderstorm activity accompanied by gusty winds (30 to 40 kmph), lightning, and light to moderate rainfall, harvesting of matured crops should be done.
- Harvest the matured crops as early as possible and keep them in safe places.
- Provide support to young fruit plants and vegetables to prevent lodging.
- If threshing is not possible, the harvested produce should be covered properly.
- For protection from untimely rains, the stored grains should be shifted to safe storage.
- Avoid irrigation and any kind of chemical spray.
- Make arrangements to drain out excess rainwater from the fields.
- Cattle should be kept in safe places in cattle sheds. Keep farm animals indoors during thunderstorms and lightning.

**Legends:-**

\* Forecast and Warning for any day is valid from 0830 hours IST of day till 0830 hours IST of next day

Intensity of Rainfall		हिन्दी / मराठी
Very Light	0.1 to 2.4 mm	बहुत हल्की वर्षा / खूप हल्का पाऊस
Light	2.5 - 15.5 mm	हल्की वर्षा / हल्का पाऊस
Moderate	15.6 - 64.4 mm	मध्यम वर्षा / मध्यम पाऊस
Heavy	64.5 - 115.5 mm	भारी वर्षा / जोरदार पाऊस
Very Heavy	115.6 - 204.4 mm	बहुत भारी वर्षा / खूप जोरदार पाऊस
Extremely Heavy	≥ 204.5 mm	अत्यधिक भारी वर्षा / अत्यंत जोरदार पाऊस
Exceptionally Heavy	When the amount is a value near about the highest recorded rainfall at or near the station for the month or season. However, this term will be used only when the actual rainfall amount exceeds 12 cm	असाधारण भारी वर्षा / असामान्य जोरदार पाऊस



Probability of Occurrence (%)	हिन्दी	मराठी
Unlikely	संभावना नहीं	शक्यता नाही
Likely (26-50% probability)	संभावित	संभाव्य / शक्य
Very Likely (51-75% probability)	अधिक संभावना	अधिक शक्यता
Most Likely (Greater than 75% probability)	अत्याधिक संभावना	अत्याधिक शक्यता

Warning Colour Codes	हिन्दी	मराठी
WARNING (TAKE ACTION)	चेतावनी	चेतावणी
ALERT (BE PREPARED TO TAKE ACTION)	सतर्क रहें	सतर्क असावे
WATCH (BE AWARE)	निगरानी रखें	लक्ष असावे
NO WARNING (NO ACTION)	कोई चेतावनी नहीं	धोक्याची सूचना नाही



Heavy Rain



Heavy Snow



Thunderstorm



Dust Storm



Strong Winds



Visibility



Cyclone



Squall/ Hail



Frost



Cold Wave



Heat Wave



Sea State

For more details kindly visit <http://www.imdmumbai.gov.in> or contact Office Tel. : +91 22 22150517 , 22174707

(Service to the Nation since 1875)